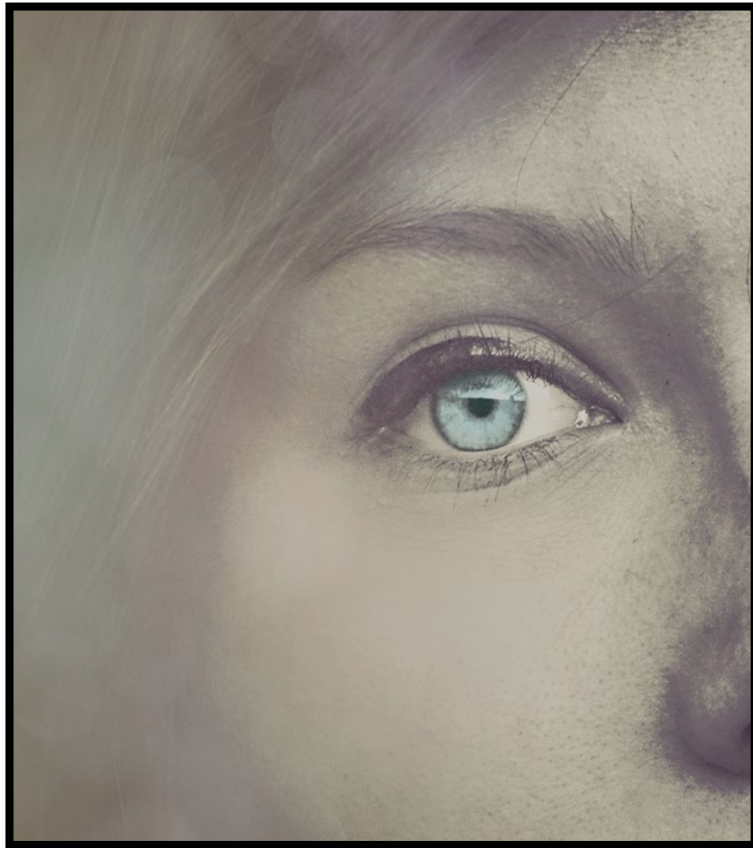




# CHERRY TREE ALLIANCE CHURCH

November 6, 2022 • 10:00 AM



***Today's Message -***  
**Blind Eyes, Blind Hearts**  
**Series: Jesus Heals the Sick**  
**A Message from John 9**  
**Speaker: Rev. David Goodin**

**10:00 AM  
WORSHIP SERVICE**  
November 6, 2022

**Call to Worship**

**Announcements**

**Friendship Greeting**

*My Life Is In You, Lord  
Great Are You, Lord*

***International Day  
of Prayer for the  
Persecuted Church Video***

**Prayer & Communion**

*Open the Eyes of My Heart*

**Message**  
*Blind Eyes, Blind Hearts*

*Jesus, I Come*

**Benediction**



## **NONE SO BLIND**

Have you ever reasoned with  
a child who did not want to  
hear what you were saying?  
Perhaps she stuck her fingers  
in her ears and began to sing,  
*la-la-la-la-la-la!*

She was determined to  
ignore you and shut you out!

Or maybe you've had a dispute  
with someone and you tried to  
prove your point by opening a  
dictionary or another reference,  
saying, *Look, It's right here!*  
Instead, they refused to look,  
or acknowledge the evidence,  
maybe even covered their eyes.

*There is none so blind  
as he who will not see.*

It's an old and apt proverb.  
An obstinate and willful person  
will refuse the plainest evidence.  
They don't want to change their  
mind even when the truth is  
overwhelming and compelling.

The Pharisees were like that.  
Jesus healed a blind man  
*in a most remarkable manner,*  
but these guys would not admit  
that such power comes only  
from God, and that, in fact,  
*Jesus himself must be divine.*

The whole story is in John 9.  
The irony is that a man who had  
never seen is given perfect sight,  
*while those who think they have*  
perfect sight are (spiritually) blind  
—because they will not see.

Jesus, give me good vision!  
*Open my eyes that I may see!*

We are Cherry Tree Alliance.

**LOVING GOD!**

**LOVING YOU!**

# BLIND EYES, BLIND HEARTS

## Jesus Heals the Sick

Jesus said, "For judgment I have come into this world, so that the blind will see and those who see will become blind."

John 9.39 (NIV)

In addition to the text, the following scriptures are referenced:  
John 9.1-41; Philippians 3.10; Romans 8.18; Ecclesiastes 12.13; John 10.19-21

**Abstract:** When God heals, the glory is his. Whatever the disease or affliction, he has authority to make us whole. The God who created this world can correct the flaws that characterize the fallenness of our world. And the God who opens blind eyes—even eyes that are blind from birth!—can open blind hearts as well.

### Your notes and comments:

*No eye has seen and no ear has heard,  
And no mind has ever conceived  
The glorious things that you have prepared  
For everyone who has believed.  
Mark Altrogge, How Great Is Your Love*



*On behalf of the pastors in our congregation: THANK YOU for your kindness during Pastor Appreciation Month! The cards and words of gratitude warmed our hearts, and we certainly felt celebrated this October! Thank you for being a church family who prays for and supports our pastors; it is a true blessing to belong to the congregation of Cherry Tree Alliance Church.*

### Congregational Meeting

We will be having a special congregational meeting **TODAY, November 6th** following the worship service. The purpose of the meeting is to vote on updating some of our church bylaws. Printed copies of the bylaws with bolded changes are available on the info table in the foyer. All are welcome to attend; members will vote on the proposed bylaw changes. Please speak with Pastor David or one of the elders if you have any questions.



*Please note: we will be showing our Veterans Day Memorial video next Sunday, November 13th.*



### AWANA Operation Christmas Child Boxes

We will be packing Operation Christmas Child shoeboxes in AWANA next Wednesday, November 9th. We plan to assemble 100 shoeboxes, and we are looking forward to a fun night of preparing these gifts to be sent around the world into the hands of children who need to hear the gospel. We are collecting donations to help with shipping the boxes. Each box costs \$10 to send. If you feel led to help with this expense, please designate your donations as "AWANA OCC."

### 50+ Lunch Bunch

The 50+ Lunch Bunch will be meeting at Eat'n Park on Wednesday, **November 16th** at 11:30 AM. Any and all of those age 50+ are invited. Contact Karen Trimble for further information. Please sign up in the foyer if you plan to attend.





## Samaritan's Purse - Operation Christmas Child

It's that time of year...time to pack a shoebox & send it on its way around the world! That box will be headed into the hands of a child living in an impoverished community and will serve as a gateway to allow Samaritan's Purse to share Christ's love with that child, their family, and their neighbors!

**Brochures & boxes have arrived in the foyer!** Our dedication Sunday for our boxes will be **next Sunday, November 13th**. Please bring your packed boxes so we can pray over them together.

**Cherry Tree Alliance will serve again as an OCC Shoebox Collection Site November 14th-21st. We are in need of volunteers!** If you can help, please sign up for a time slot(s) at the OCC table in the foyer. We need folks who can assist with receiving shoeboxes, pray over the boxes, and pack the trailers.

Our hours are:

Monday, November 14th: 9:00 AM - 1:30 PM  
Tuesday, November 15th: 5:00 PM - 7:00 PM  
Wednesday, November 16th: 5:00 PM - 7:00 PM  
Thursday, November 17th: 5:00 PM - 7:00 PM  
Friday, November 18th: 9:00 AM - 1:30 PM  
Saturday, November 19th: 10:00 AM - 5:00 PM  
Sunday, November 20th: 11:00 AM - 4:00 PM  
Monday, November 21st: 11:00 AM - 4:00 PM

**We are also seeking donations of baked goods (cookies, brownies, etc.) to prepare a "welcome table" for those in our community when they stop to drop off boxes.** If you would be willing to prepare or purchase some snacks for this purpose, please see the Collection Week Snacks sign-up sheet. Thank you!

### Shoebox Packing Highlight: Personal Care & Clothing

Looking for inspiration for what kinds of hygiene and clothing to pack in your OCC shoebox? Below are some suggestions. *Think about the age child you are packing for to help narrow down your best options!*

Comb or hairbrush / Toothbrush / Washcloth / Colorful adhesive bandages / Reusable plastic containers such as a cup, water bottle, plate, bowl, and blunt-edged utensils / Blanket / Non-liquid lip balm / Flashlight (solar-powered or hand crank, include batteries if battery operated) / Compact mirror / Nail clipper & file / Stick deodorant / Shirts / Pants / Pillowcase dress (loose-fitting sundress) / Underwear / Shoes / Socks / Flip-flops / Hat / Scarf / Mittens / Sunglasses / Tote bag or purse / Friendship bracelets / Wristwatch / Bead jewelry or bead kit / Hair accessories / Bandana



## Missions Conference

Our guests are well-known friends of Cherry Tree Alliance who serve in a Creative Access Country.

**Wednesday, November 16th**  
6:30 PM Missions Night  
at AWANA Clubs & Capacity

### **Sunday, November 20th**

10:00 AM Morning Worship Service  
& Children's Parade of Nations  
6:00 PM Evening Presentation (missions updates, both overseas and local) followed by Dessert Social

Please sign up at the church bulletin board if you plan to attend the evening presentation & dessert social.

*Please note: because of the sensitive nature of the material presented during the Sunday morning service, we will not be able to livestream the service. Instead, we hope to replay a previous Missions Conference Sunday video for those watching online.*



**We are looking for church attendees to form a choir for a special advent number on December 18th** (rehearsal on December 17th; time TBA). This is for one song and would require minimum practice. If you would be interested, please sign up on the church bulletin board with your contact info; we will be in touch soon with rehearsal details.

## Immerse Small Groups

You can jump into an Immerse small group at any time! Please check in the foyer for a reading plan & Bible. Contact Pastor Bryson with any questions.



## Immerse Bible Groups Schedule

### **Wednesday Women's Bible Study**

Weekly from 6:30 - 8:00 PM (during AWANA)  
Runs through 12/4 with Becky Bavetz at CTAC

### **Sunday Evening Adults Group (ages 20s, 30s, 40s)**

Biweekly from 6:00 - 7:15 PM  
Meeting 11/6, 11/20, 12/4  
with Pastor Bryson Taylor at CTAC

### **Sunday Evening College-Age Students**

Weekly from 7:30 - 8:15 PM  
Runs through 12/4 with Pastor Bryson Taylor at CTAC



## AWANA Clubs

Our AWANA Clubs for ages 3 years old through 5th grade are held every Wednesday evening, 6:30 - 8:00 PM.



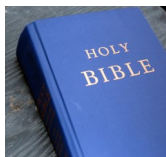
### Capacity

Wednesday Night Ministry / 6:30 - 8:00 PM  
Grades 6th-12th

Please contact Joshua Mitchell with any questions at [capacityallianceyouth@gmail.com](mailto:capacityallianceyouth@gmail.com).

### Revelation Sunday School Class

Rev. Mark Berkshire is leading a class on Sunday mornings at 8:30 AM titled *Revelation Doesn't Have to Be Scary!* Rev. Mark has studied and taught this book for many years. Join us on Sunday mornings!  
The class is held in Room 201.



### Kids & Capacity Sunday Ministry

Jr. Kids Church - 10:00 AM on Sunday Mornings  
Ages Pre-K / K-1st Grade / 2nd through 5th Grade  
Nursery Care available



Capacity Church - 10:00 AM on Sunday Mornings  
6th-8th Grade - Contact Joshua Mitchell with any questions at [capacityallianceyouth@gmail.com](mailto:capacityallianceyouth@gmail.com).



## International Workers of the Week

Please pray for our international workers of the week, Steve & Claudia Irvin, who have served in Spain and are currently on home assignment. Please join us in prayer for their ministry: *"Back in Spain, the INFORMA Bible Institute celebrated this year's graduation ceremony on Saturday night with five new graduates. We watched the live-streamed event and rejoiced to see students whom we love finishing this stage of their leadership training. One student from Italy, who did all her coursework online, made the trip to Madrid to participate in the ceremony. Another, who was widowed mid-way through her studies, came from Equatorial Guinea to give glory to God for His faithfulness in her life. Another's studies were interrupted by cancer and by Covid, but the Lord saved his life and enabled him to fulfill his study requirements. We could go on and on proclaiming the faithfulness of God. Pray for INFORMA Bible Institute as the new director adjusts to the leadership role. May the Lord continue to use INFORMA in the formation of leaders in the kingdom of God. / Please pray for us that we will faithfully fulfill the ministry God has given us during this year of home assignment. Ask the Lord to fill us daily with the Holy Spirit as we minister in the churches to different age groups. Also, please stand with us in prayer as we seek to discern next steps in ministry beginning mid-2023. Our hearts are open as we look to Him for guidance."*

## Prayer of the Day

Today is the International Day of Prayer for the Persecuted Church. Join us in sincere prayer for our brothers & sisters in Christ around the globe who are suffering severe persecution for their belief in Jesus. May God grant them deliverance, protection, & peace.



### Moms in Prayer - Mondays at 6:00 PM

Please ask the church office for Teresa's number for the meeting details and the Zoom link.

**The C&MA has workers in Ukraine who are actively engaged in relief aid right now through Compassion and Mercy Associates, the relief arm of the Alliance.** To donate, please write "Ukraine" on your offering envelope or in the memo box of online giving (select "Other" for fund).

Two offering plates are located at the back of the sanctuary. You may also place your offering in the wall lockbox outside the church office door. To give online, visit our website at [www.cherrytreealliance.org/giving](http://www.cherrytreealliance.org/giving) to check out our electronic donation service using the program Tithe.ly.



**Thanks for your faithful giving!**

### GIVING

Operating Fund Giving for October: \$28,060  
Operating Fund Giving for November: \$1,389  
(Amount needed monthly: \$27,467)  
Last Week's Great Commission Giving: \$385

### LAST WEEK'S ATTENDANCE

10:00 AM Worship Service: 104  
Children's Church: 17  
Livestream Views: 158

## Cherry Tree Alliance Church

640 Cherry Tree Lane  
Uniontown, PA 15401  
(724) 550-4624

[ctallch@verizon.net](mailto:ctallch@verizon.net)  
[www.cherrytreealliance.org](http://www.cherrytreealliance.org)  
Guest WiFi: ctac7777

